

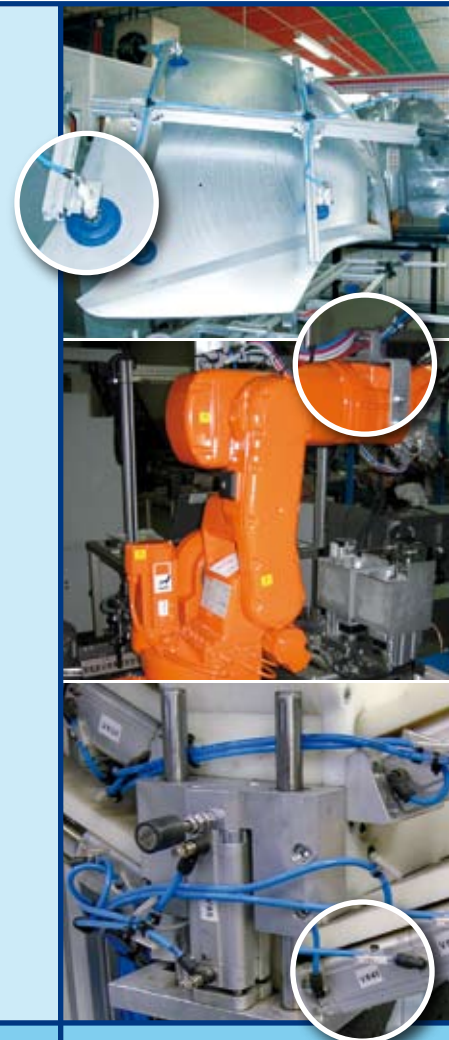
Female plugs, with instant connection

NEW



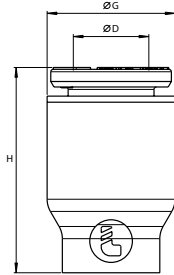
Close or protect pneumatic circuits immediately

- Maintaining the integrity of pneumatic systems during production changeovers
Quickly isolating component air supplies
- Protection of pneumatic equipment for storage
Optimum protection of equipment against dirt and dust, for secure storage or during maintenance operations
- Protection of new equipment during delivery
Optimum protection of pneumatic circuits during transportation



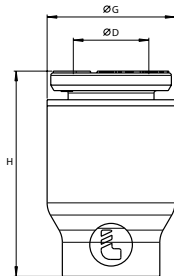
Technical specifications

► 3151 female plug for metric tubing 4mm to 12 mm o.d.



Ø D (mm)		Ø G (mm)	H (mm)	Weight (kg)
4	3151 04 00	8,5	14,7	0,001
6	3151 06 00	10,5	16,9	0,001
8	3151 08 00	13,5	21,9	0,002
10	3151 10 00	16	22,2	0,003
12	3151 12 00	19	27,7	0,006

► 3151 female plug for imperial tubing 1/8" to 3/8" o.d.



Ø D (in)		Ø G (in)	H (in)	Weight (oz)
1/8	3151 53 00	.33	.55	.024
5/32	3151 04 00	.33	.55	.035
1/4	3151 56 00	.41	.64	.032
5/16	3151 08 00	.53	.86	.070
3/8	3151 60 00	.53	.88	.056

► Working conditions

Suitable fluid: compressed air
 Working pressure: 20 bar
 Working temperature: -20°C to +80°C

► Materials

Body: polymer H.R.
 Gripping ring: stainless steel
 'O' ring: nitrile

► An extensive range of plugs

With instant connection	With brass threaded connection	With steel or stainless steel connection
<p>3151</p> <ul style="list-style-type: none"> Female plugs for tubing ends 	<p>0200</p> <ul style="list-style-type: none"> Brass plugs for threaded ports 	<p>0206</p> <ul style="list-style-type: none"> Steel plugs for demanding environments
<p>3126</p> <ul style="list-style-type: none"> Nylon plugs for polymer instant fittings 	<p>0205</p> <ul style="list-style-type: none"> Metric, BSP and NPT threads 	<p>0210</p> <ul style="list-style-type: none"> BSP and NPT threads
<p>3626</p> <ul style="list-style-type: none"> Nickel-plated brass plugs for metal instant fittings - FDA approved 	<p>0220</p>	<p>0285</p> <ul style="list-style-type: none"> Stainless steel 316L plugs for extreme conditions of use BSPT and NPT threads
	<p>0222</p> <ul style="list-style-type: none"> Nickel-plated brass plugs for threaded ports Sealing reinforced by an 'O' ring M5 and BSPP threads Assembled using a flat spanner or Allen key 	

Legris Connectic offers a comprehensive range of push-in fittings and tubing, please consult our general catalogue or visit:

www.legris.com